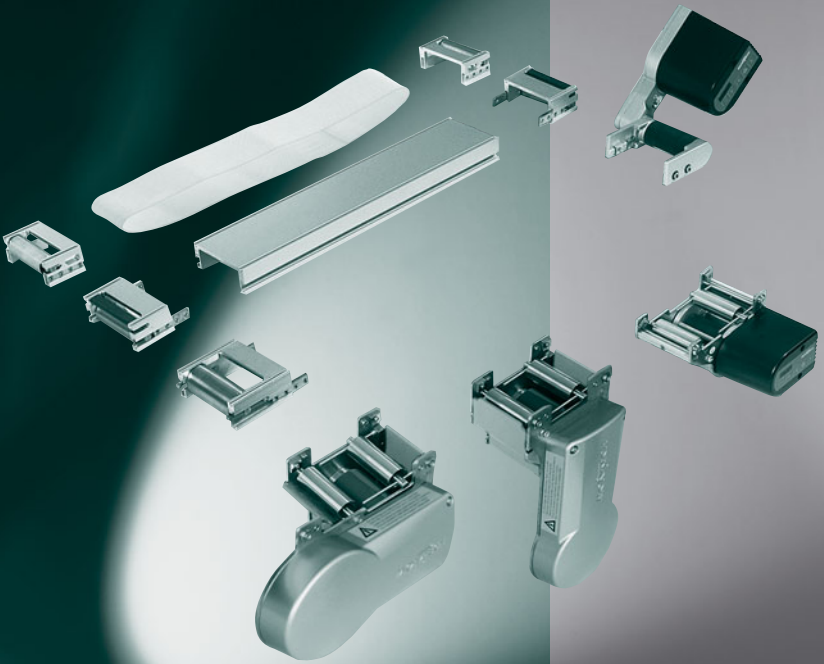


MONTECH[®]

CONVEYORS



**MODULARITY
INSPIRES**

SMALL CONVEYOR BELT KTB

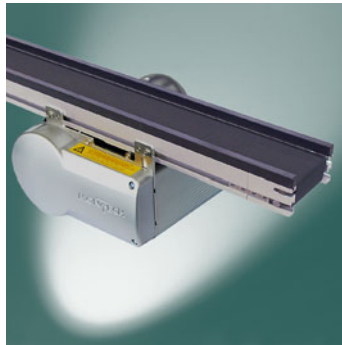
With its compactness and integrated control system, the KTB is the optimum solution for a number of requirements. The belt is powered by a controlled, brushless 24 VDC motor with variable speed and a feature for freely selecting the direction of travel. The small conveyor belts are available as single or tandem belt conveyors with head or center drive units. They can also be controlled externally.



Chassis width: 45–250 mm
Type of drive: Head and center drive
Motor: 24 VDC
Gearing: Spur gear
Belt speeds: 0.4–21 m/min
Maximum load: 20 kg

CONVEYOR BELT TB

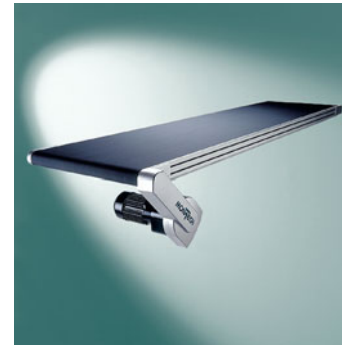
These conveyor belts are ideal for customer specified requirements due to their modular design. You have the choice between a single or tandem belt model. The TTBD tandem belt is the perfect model for transporting larger pallets and other products that maintain their shape.



Chassis width: 60–250 mm
Type of drive: Center drive
Motor: 230/400 V
Gearing: Spur gear
Belt speeds: 0.6–38.4 m/min
Maximum load: 110 kg

LARGE CONVEYOR BELT GTB

The large conveyor belts are available with head, center and drum motor drive. The system is powered by a 230/400 V spur-gearing motor with large power reserves. In the center drive model, a purely mechanical, automatic belt tensioning unit ensures that the belt is always tightened only to the extent necessary and not to maximum load. The drum motor allows for slim construction without interfering edges.



Chassis width: 200–800 mm
(900–1200 mm optionally available)
Type of drive: Head, center and drum drive
Motor: 230/400 V
Gearing: Spur gearing/planetary gearing
Belt speeds: 0.5–56.6 m/min
Maximum load: 125 kg

LONGITUDINAL TRANSFER SYSTEM LTE

The LTE is an asynchronous system that automatically guides the work pieces from one conveyor belt to the next through the necessary work stations according to the specified assembly sequence for the parts. The modular design allows the process to be automated step by step. Subsequent adaptations can be made at minimal costs. Each layout configuration is easy to implement thanks to curves, switches, bypasses and other individual components.



Size of work piece carrier:
80 x 80 ... 225 x 225 mm
Chassis width: 105–250 mm
Type of drive: Center drive
Motor: 230/400 V
Gearing: Spur gear
Belt speeds: 7.5–19.9 m/min



MONTECH AG

Gewerbestrasse 12, CH-4552 Derendingen

Fon +41 32 681 55 00, Fax +41 32 682 19 77

info@montech.com, www.montech.com