



**ERSATZTEILLISTE
SPARE PARTS LIST
LISTE DES PIÈCES DE RECHANGE
ELENCO DEI PEZZI DI RICAMBIO**

Shuttle 3



EL-100066

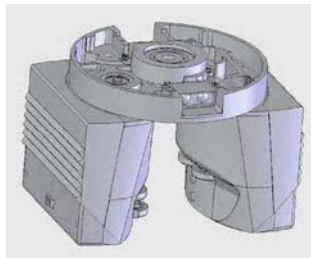
Ausgabe / Edition 07/2009



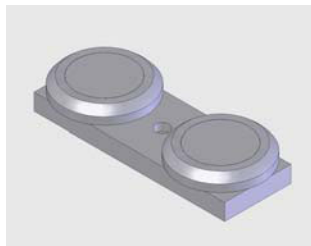
D Laufwagenprofil
E Carriage
F Profilé de navette
I Profilo del carello



D Motorensteuerung
E Motor control
F Commande moteur
I Controllo motore



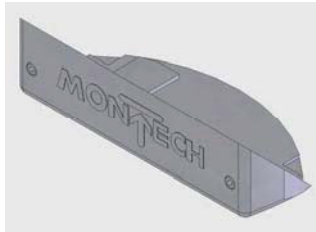
D Achse
E Axle
F Articulation
I Asse



D Achse hinten
E Rear axle
F Articulation derrière
I Asse posteriore

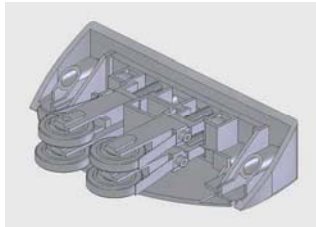
Baugruppe Assembly group Élément Elemento completo	Art. Nr. Art. num. Réf. unité Art. No.	Laufwagen Carriage Profilé de navet. Profilo del carel.	Motorensteuerung Motor control Commande moteur Controllo motore	Achse Axle Articulation Asse	
				Front	Rear
Shuttle U 300	54793	91013 (without rear axle)	520126	90890	91945
Shuttle U 400	54795	91014 (without rear axle)	520126	90890	91945
Shuttle U 550	54797	91015 (with rear axle)	520126	90890	45774
Shuttle GU 300	54794	91013 (without rear axle)	520126	90891	91945
Shuttle GU 400	54796	91014 (without rear axle)	520126	90891	91945
Shuttle GU 550	54798	91015 (with rear axle)	520126	90891	45774

Shuttle with rear axle empty U	54801	91531 (without rear axle)	520126		90890	90994
Shuttle with rear axle empty GU	54802	91531 (without rear axle)	520126		90891	90994
2-Axle Shuttle U	54799	91531 (without rear axle)	Front 520287	Rear 520288	91532	91534
2-Axle Shuttle GU	54800	91531 (without rear axle)	Front 520287	Rear 520288	91533	91534



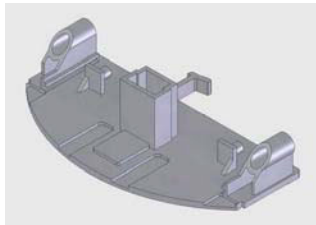
D
E
F
I

Deckel Art. Nr. 57052
Cover art. num. 57052
Couvercle Réf. unité 57052
Coperchio Art. No. 57052



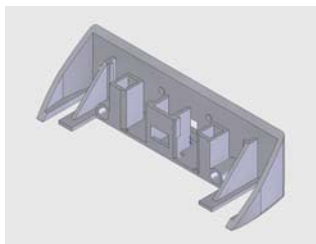
D
E
F
I

Stromabnehmer Art. Nr. 91166
Current collector art. num. 91166
Collecteur de courant Réf. unité 91166
Presa di corrente Art. No. 91166



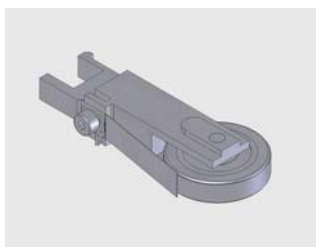
D
E
F
I

Gehäuse zu Stromabnehmer inkl. Bedämpfung (10 Stück) Art. Nr. 58627
Housing to current collector with damping strip (10 pieces) art. num. 58627
Boîtier pour collecteur de courant avec feuilard pour détection (10 pièces) Réf. unité 58627
Scatola per presa di corrente con piastrina metallica per detettzione (10 pezzi) Art. No. 58627



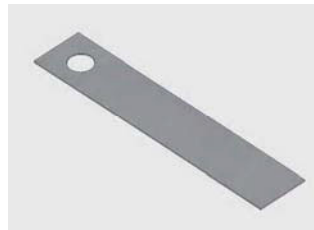
D
E
F
I

Schublade zu Stromabnehmer (10 Stück) Art. Nr. 58626
Drawer to current collector (10 pieces) art. num. 58626
Tiroir pour collecteur de courant (10 pièces) Réf. unité 58626
Cassetto per presa di corrente (10 pezzi) Art. No. 58626

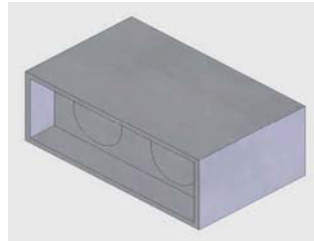


D
E
F
I

Kohlerolle Art. Nr. 91600
Carbon roller art. num. 91600
Rouleau collecteur Réf. unité 91600
Anello di carbone Art. No. 91600



- D Kontaktfeder (20 Stück) Art. Nr. 58607
 E Contact blade (20 pieces) art. num. 58607
 F Ressort de contact (20 pièces) Réf. unité 58607
 I Molla di contatto (20 pezzi) Art. No. 58607



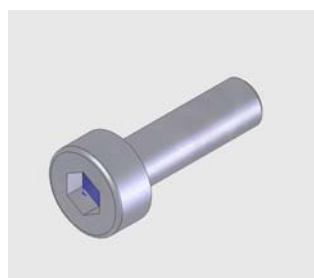
- D Distanzsensor Art. Nr. 506895
 E Distance sensor art. num. 506895
 F Cellule opto-électronique Réf. unité 506895
 I Sensore di distanza Art. No. 506895



- D Näherungsschalter zu Motorensteuerung 55042, 55043, 55044
 Art. Nr. 90423
 E Proximity switch to motor control 55042, 55043, 55044
 art. num. 90423
 F Détecteur de proximité pour commande moteur 55042, 55043,
 55044 Réf. unité 90423
 I Interruttore di prossimità per controllo motore 55042, 55043,
 55044 Art. No. 90423



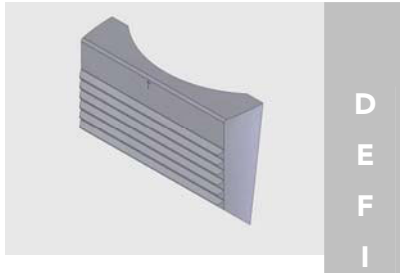
- D Näherungsschalter ab Serie 418097
 Art. Nr. 56891
 E Proximity switch starting from serial number 418097
 art. num. 56891
 F Détecteur de proximité à partir du numéro de série 418097
 Réf. unité 56891
 I Interruttore di prossimità a partire dal numero di serie 418097
 Art. No. 56891



- D Einstellschraube Art. Nr. 90055
 E Adjusting screw art. num. 90055
 F Vis de réglage Réf. unité 90055
 I Vite di regolazione Art. No. 90055



- D Kabel ISM Art. Nr. 57053
 E Cable ISM art. num. 57053
 F Câbles ISM Réf. unité 57053
 I Cable ISM Art. No. 57053



- D Abdeckung (Getriebeseitig) (10 Stück) Art. Nr. 59581
E Cover (gear side) (10 pieces) art. num. 59581
F Protection (côté réducteur) (10 pièces) Réf. unité 59581
I Coperchio (cambio di lato) (10 pezzi) Art. No. 59581