



**ERSATZTEILLISTE
SPARE PARTS LIST
LISTE DES PIÈCES DE RECHANGE
ELENCO DEI PEZZI DI RICAMBIO**

**KTB-M, KTBD-M,
KTB-K, KTBD-K**



EL-100052

Ausgabe / Edition 12/2005

Änderungsindex / Change index / Indice de modification / Indice delle modifiche

Bisher erschienene Ausgaben:

Edition issued so far:

Editions parues à se jour:

Edizioni finora pubblicate:

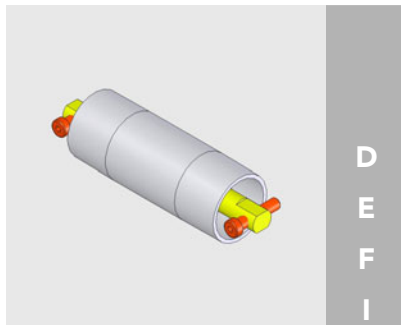
Ausgabe Edition Edition Edizione	Bemerkung Comments Remarque Osservazioni	Artikelnummer Order number Référence Articolo numero
09/2005	Erstausgabe <i>First edition</i> Première édition <i>Prima edizione</i>	508884
12/2005	Neue Artikelnummer <i>New Order number</i> Nouvelle Référence <i>Nuova Articolo numero</i>	EL-100052

Bandende Mittenantrieb

Conveyor end for centre drive

Châssis d'extrémité pour entraînement central

Estremità nastro per motorizzazione centrale



D
E
F
I

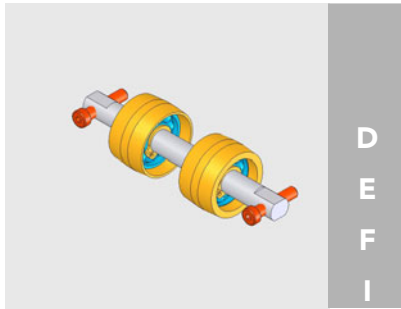
Umlenkrolle

Diverter roller

Rouleau de renvoi

Rullo di rinvio

Baugruppe Assembly group Élément Elemento completo	Art. Nr. Art. num. Réf. unité Art. No.	Umlenkrolle Art. Nr. Diverter roller art. num. Rouleau de renvoi Réf. unité Rullo di rinvio Art. No.
Bandende TB/KTB-45 UR ø30 kompl.	56987	56955
Bandende TB/KTB-45 MK kompl.	54871/045	48424
Bandende TB/KTB-60 UR ø30 kompl.	56988	56956
Bandende TB/KTB-60 MK kompl.	54871/060	37290
Bandende TB/KTB-80 UR ø30 kompl.	56989	56957
Bandende TB/KTB-80 MK kompl.	54871/080	37293
Bandende TB/KTB-105 UR ø30 kompl.	56990	56958
Bandende TB/KTB-105 MK kompl.	54871/105	37296
Bandende TB/KTB-140 UR ø30 kompl.	56991	56959
Bandende TB/KTB-140 MK kompl.	54871/140	37299



D
E
F
I

Umlenkrolle
Diverter roller
Rouleau de renvoi
Rullo di rinvio

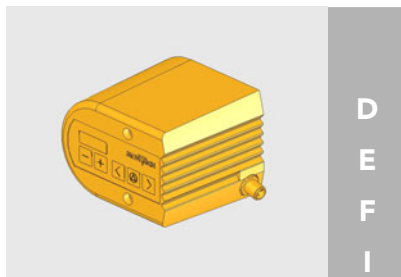
Baugruppe Assembly group Élément Elemento completo	Art. Nr. Art. num. Réf. unité Art. No.	Umlenkrolle Art. Nr. Diverter roller art. num. Rouleau de renvoi Réf. unité Rullo di rinvio Art. No.
Bandende TBD/KTBD-105 UR ø30 kompl.	56994	56962
Bandende TBD/KTBD-105 MK kompl.	54873/105	55215
Bandende TBD/KTBD-140 UR ø30 kompl.	56995	56963
Bandende TBD/KTBD-140 MK kompl.	54873/140	55216

Antriebseinheit Mittenantrieb

Drive unit for centre drive

Entraînement pour entraînement central

Gruppo motore per motorizzazione centrale

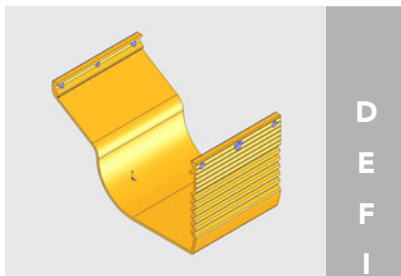

 D
E
F
I

Schutzhaube komplett KTB Art. Nr. 48445

Cover for KTB complete art. num. 48445

Capot de protection complet pour KTB Réf. unité 48445

Calotta di protezione completa per KTB Art. No. 48445


 D
E
F
I

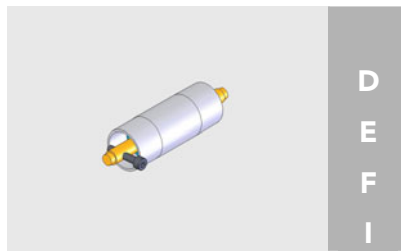
Schutzblech

Guard plate

Tôle de protection

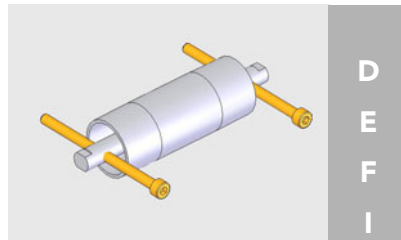
Lamiera di protezione

Baugruppe Assembly group Élément Elemento completo	Schutzblech Art. Nr. Guard plate Art. num. Tôle de protection Réf. unité Lamiera di protezione Art. No.
KTB-45	48439
KTB-60	48440
KTB-80	48441
KTB/KTBD-105	48442
KTB/KTBD-140	48443



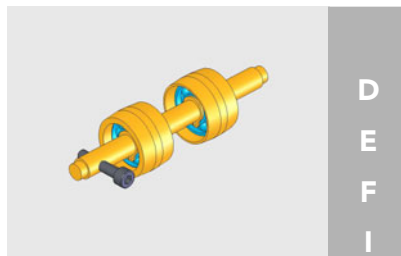
D
E
F
I

Umlenkrolle kompl. KTB
Diverter roller KTB
Rouleau de renvoi KTB
Rullo di rinvio KTB



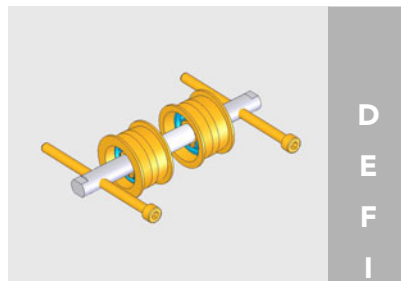
D
E
F
I

Spannrolle kompl. KTB
Tension roller KTB
Rouleau de tension KTB
Rullo tendinastro KTB



D
E
F
I

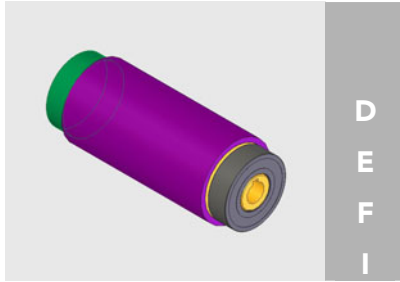
Umlenkrolle kompl. KTBD
Diverter roller KTBD
Rouleau de renvoi KTBD
Rullo di rinvio KTBD



D
E
F
I

Spannrolle kompl. KTBD
Tension roller KTBD
Rouleau de tension KTBD
Rullo tendinastro KTBD

Baugruppe <i>Assembly group</i> Élément <i>Elemento com.</i>	Umlenkrolle kompl. Art. Nr. <i>Diverter roller Art. num.</i> Rouleau de renvoi Réf. unité <i>Rullo di rinvio Art. No.</i>	Spannrolle kompl. Art. Nr. <i>Tension roller Art. num.</i> Rouleau de tension Réf. unité <i>Rullo tendinastro Art. No.</i>
KTB-45	48419	48423
KTB-60	47627	38357
KTB-80	48420	38358
KTB-105	48421	38359
KTB-140	48422	38360
KTBD-105	55246	55223
KTBD-140	55247	55224


 D
E
F
I

Antriebsrolle KTB/KTBD

Drive roller KTB/KTBD

Rouleau d'entraîn. KTB/KTBD

Rullo di comando KTB/KTBD

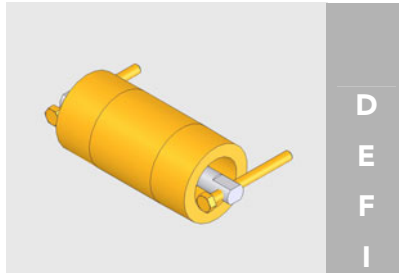
Baugruppe Assembly group Élément Elemento completo	Antriebsrolle Art. Nr. Drive roller Art. num. Rouleau d'entraîn. Réf. unité Rullo di comando Art. No.
KTB-45	48434
KTB-60	48435
KTB-80	48436
KTB/KTBD-105	48437
KTB-140	48438
KTBD-140	49102

Bandende Kopfantrieb

Conveyor end for end drive

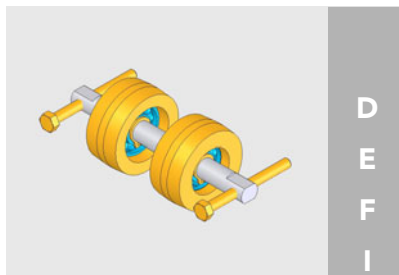
Châssis d'extrémité pour l'entraînem. en tête

Estremità nastro per azionamento di testa



D	Umlenkrolle
E	Diverter roller
F	Rouleau de renvoi
I	Rullo di rinvio

Baugruppe Assembly group Élément Elemento completo	Art. Nr. Art. num. Réf. unité Art. No.	Umlenkrolle Art. Nr. Diverter roller art. num. Rouleau de renvoi Réf. unité Rullo di rinvio Art. No.
Bandende KTB-45K UR ø40 kompl.	54874/045	48527
Bandende KTB-60K UR ø40 kompl.	54874/060	48488
Bandende KTB-80K UR ø40 kompl.	54874/080	48528
Bandende KTB-105K UR ø40 kompl.	54874/105	48529
Bandende KTB-140K UR ø40 kompl.	54874/140	48530



D	Umlenkrolle
E	Diverter roller
F	Rouleau de renvoi
I	Rullo di rinvio

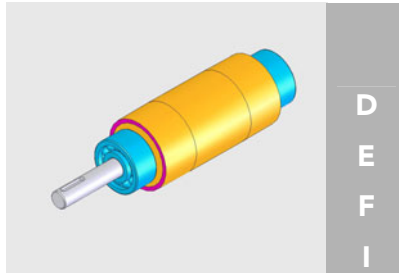
Baugruppe Assembly group Élément Elemento completo	Art. Nr. Art. num. Réf. unité Art. No.	Umlenkrolle Art. Nr. Diverter roller art. num. Rouleau de renvoi Réf. unité Rullo di rinvio Art. No.
Bandende KTBD-105K UR ø40 kompl.	54882/105	54316
Bandende KTBD-140K UR ø40 kompl.	54882/140	54317

Antriebseinheit Kopfantrieb

Drive unit for end drive

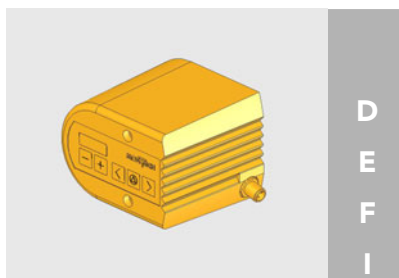
Entraînement pour l'entraînement en tête

Gruppo motore per azionamento di testa

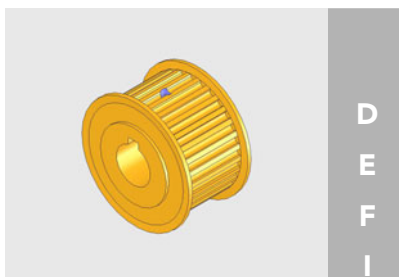


D	Antriebsrolle
E	Drive roller
F	Rouleau d'entraîn.
I	Rullo di comando

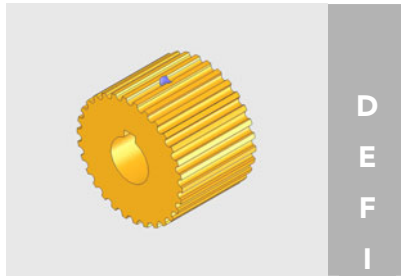
Baugruppe Assembly group Élément Elemento completo	Antriebsrolle Art. Nr. Drive roller Art. num. Rouleau d'entraîn. Réf. unité Rullo di comando Art. No.
KTB-45K	48531
KTB-60K	48479
KTB-80K	48532
KTB-105K	48533
KTB-140K	48534
KTBD-105K	55305
KTBD-140K	55306



D	Schutzhaube komplett KTB Art. Nr. 48445
E	Cover for KTB complete art. num. 48445
F	Capot de protection complet pour KTB Réf. unité 48445
I	Calotta di protezione completa per KTB Art. No. 48445



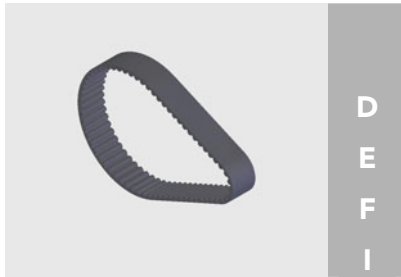
D	Zahnscheibe Getriebemotor KTB-K Art. Nr. 48106
E	Cog wheel for drive motor KTB-K art. num. 48106
F	Roue denté pour motor-réducteur KTB-K Réf. unité 48106
I	Disco dentato per motore-riduttore KTB-K Art. No. 48106

D
E
F
I

Zahnscheibe Antriebsrolle KTB-K Art. Nr. 48109

Cog wheel for drive roller KTB-K art. num. 48109

Roue denté pour rouleau d'entraî. KTB-K Réf. unité 48109

Disco dentato per rullo d'azion. KTB-K Art. No. 48109D
E
F
I

Zahnriemen 3MR-330-15 KTB-K Art. Nr. 506367

Toothed belt 3MR-330-15 KTB-K art. num. 506367

Courroie dentée 3MR-330-15 KTB-K Réf. unité 506367

*Cinghia dentata 3MR-330-15 KTB-K Art. No. 506367***Getriebemotor siehe Katalog*****Spur gearing motor see catalog*****Moteur réducteur confer catalogue*****Motore-riduttore assolvere catalogo***